

MONTHLY MEMBERSHIP PROGRESS REPORT

LOCATION PENNSYLVANIA

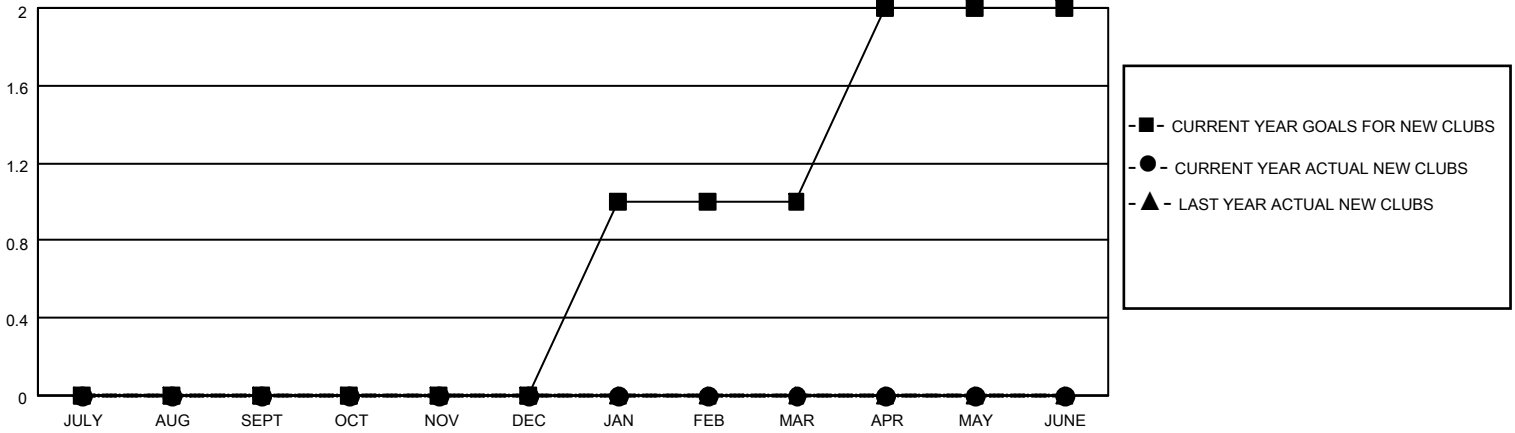
District 14 L

Results as of: 10/31/2022

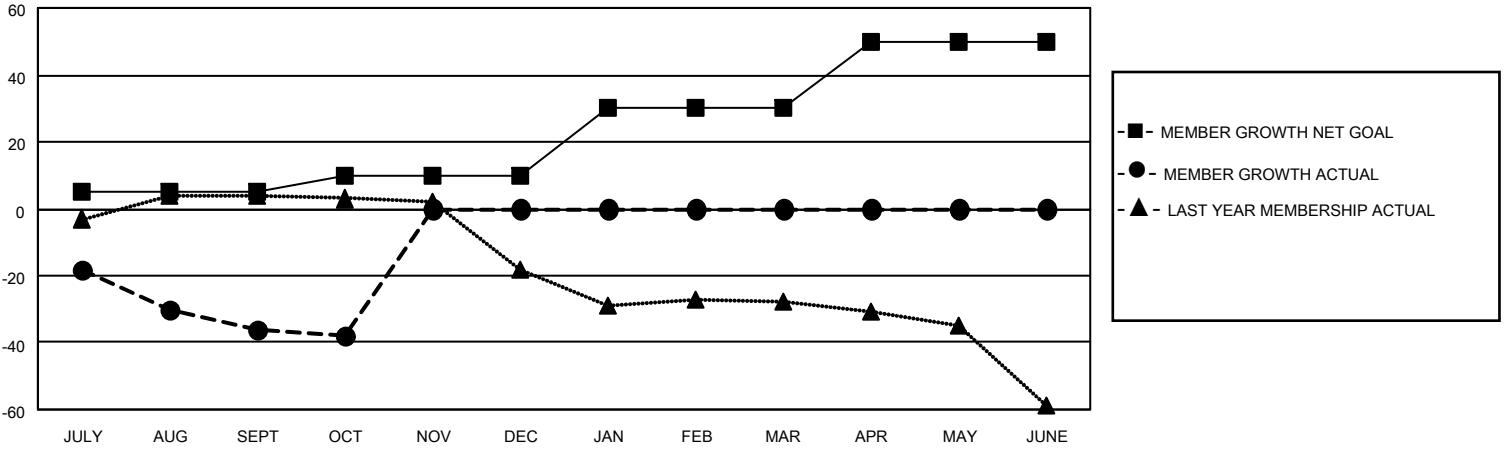
Clubs			
RESULTS FOR 2022-2023			
QUARTER	NEW CLUB GOAL	NEW CLUBS	DROPPED CLUBS
JULY/AUG/SEPT	0	0	0
OCT/NOV/DEC	0	0	0
JAN/FEB/MAR	1	0	0
APR/MAY/JUNE	1	0	0

Members			
RESULTS FOR 2022-2023			
QUARTER	MEMBER GROWTH NET GOAL	MEMBER GROWTH ACTUAL	DROPPED MEMBERS ACTUAL (including transfers)
JULY/AUG/SEPT	5	22	46
OCT/NOV/DEC	5	3	4
JAN/FEB/MAR	20	0	0
APR/MAY/JUNE	20	0	0

GOALS AND ACTUAL NEW CLUBS CUMULATIVE



GOALS AND ACTUAL MEMBERS CUMULATIVE



DROPPED CLUBS: 0

7 CLUBS OF 37 ADDED 1 OR MORE NEW MEMBERS

GENDER DISTRIBUTION

MALE	600 (70.75%)
FEMALE	248 (29.25%)
NON BINARY	0 (0.00%)
PREFER NOT TO ANSWER	0 (0.00%)

DROPPED MEMBERS

[CLICK HERE FOR CUMULATIVE MEMBERSHIP DATA](#)

DECEASED	11
CLUB CANCELLED	0
OTHER	39
TOTAL	50

TOTAL FAMILY UNIT MEMBERS 172

FAMILY MEMBERS PAYING HALF DUES 91